



Landscape

MIDDLE EAST | DECEMBER 2019






From The Floor of  , The Directors & Managers of  **RAYMOND SPORT**
LET'S PLAY
www.raymondsport.com

Thank Their Clients & Visitors For Making  A Resounding Success.

To The Rulers And The People of The UAE 

 **RAYMOND SPORT**
LET'S PLAY
www.raymondsport.com Extend Their Congratulations on Your 48th National Day.

ACTGLOBAL™
SPORTS

AFN
SPORTS

Avant
SPORTS


CONNOR SPORTS
 Where Champions Play

EPI
SPORTS

KRAIBURG


SAWO


LED Sports Light®

LIFE FLOOR

OASIS
 SEAMLESS SAFETY RUBBER FLOORING

PREMIER
 SPORTS COATINGS

RIGAN
 SPORTS

DYNAMO
 PLAYGROUNDS

RS RAYMOND SPORT®
LET'S PLAY™
www.raymondsport.com

AN RS LEISURE GROUP COMPANY

+971 4 339 1331 (Dubai) | +971 2 449 9196 (Abu Dhabi) | office@raymondsport.com | www.raymondsport.com

EDITOR'S NOTE

In this issue,

We end the year on a celebratory note, thankful for your support throughout the year and for the success of our recent Landscape Middle East awards at the Ritz Carlton hotel in DIFC, Dubai. It was a wonderful opportunity to gather the brightest and most creative minds from the Landscape industry under one roof to celebrate each other's achievements and discuss new projects, as well as the challenges of our business. It also reminded us of the importance of our platform to the industry, we are the voice of landscape professionals in the region and we hope to continue to champion your projects, your businesses and your wins over the coming year! In order to keep our platform thriving, we encourage you to engage with us regularly by sharing your stories and help us to expand our landscape community in the region.

We've packed in as much as possible into the last issue of the year, from projects in Australia and Canada to residential projects in Islamabad and Sharjah.

I hope you enjoy the issue!

John Hampton

The opinions and views contained in the articles in this publication are those of the contributors and not necessarily of the publishers. The publishers cannot be held liable for any mistake or omission enclosed in the publication.

Managing Partner:

Ziad Maarouf Amine

Copy Editor:

John Hampton

Sales Manager:

Boushra Dinnawi

Administrative Assistance:

Sarry Gan

Art Director:

Ramon Andaya

Contributors:

**Jimena Martignoni, Sajid Kagadi,
Merve Ersan, Pénélope Fortin, Dima
Rachid, Israr Ahmed, Kelly O'Rourke**

Printed by:

Al Nisr Publishing LLC

Webmaster:

www.pdinventive.com

For free subscription and to view the magazine
please visit our website:

www.landscape-me.com

The First Specialised Landscape magazine in the
Middle East

**Our magazine is available
in app store and google play,
search under Landscape
Middle East.**

Landscape is distributed free of charge in KSA,
UAE, Qatar, Kuwait, Bahrain, Oman, Jordan,
Egypt, and Lebanon by Emirates Post UAE

PUBLISHED BY:

MEMEDIA
Publishing

MEMedia Publishing FZ LLC
IMPZ

PO Box 485005, Dubai, UAE
Telephone: +971 4 4470927
Fax: +971 4 4470928



36

CONTENTS

December 2019 - Issue 150

- 4** Landscape Awards roundup
- 28** Minor paradises
- 32** Interview with Sajid Kagadi
- 36** Designing open spaces
- 40** A Pakistani family home that blends and ages with the landscape
- 44** Recreating the magic of EXPO 67
- 50** Karratha health campus from Baron Sandpit to restorative oasis



40



44

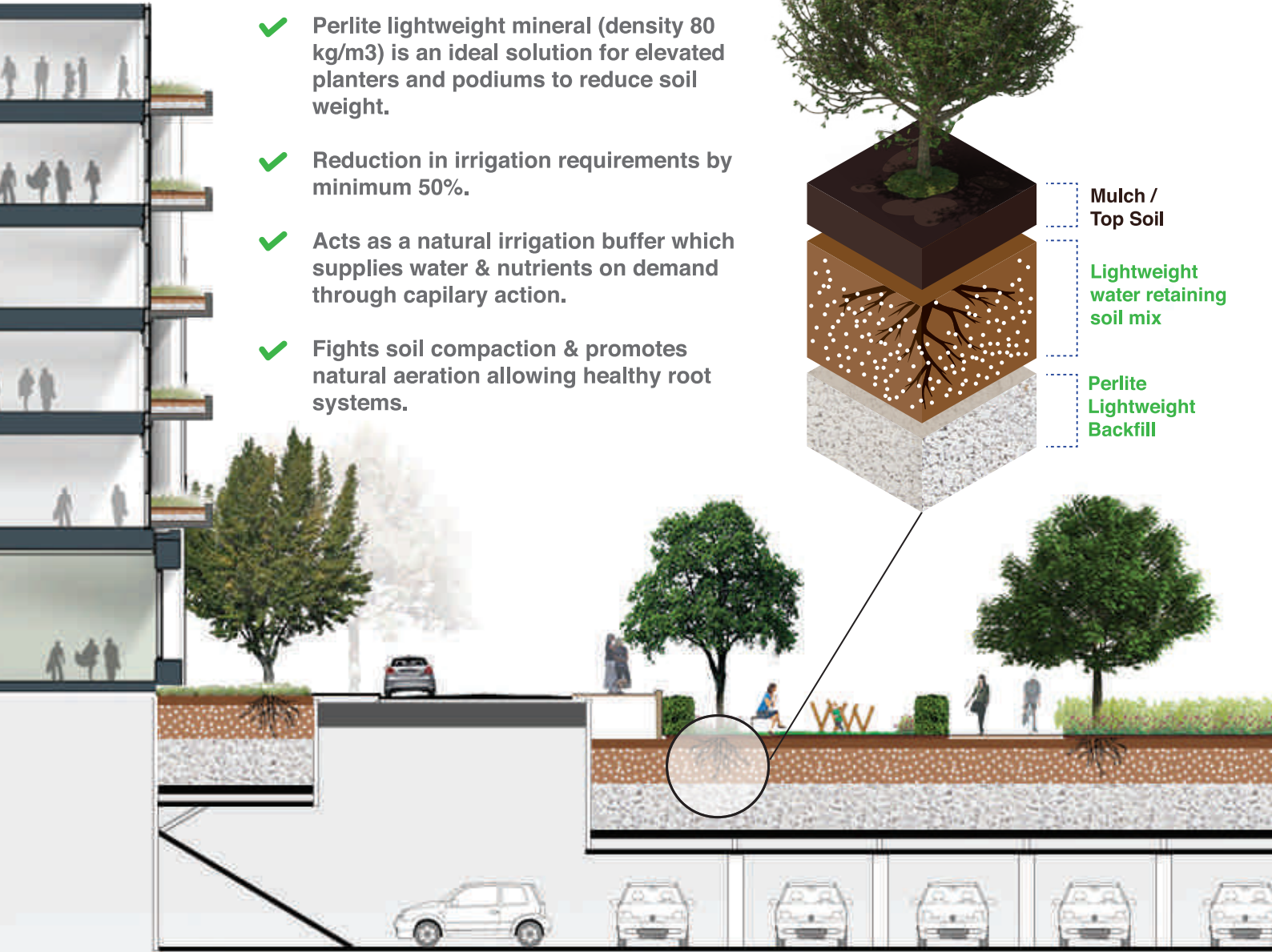
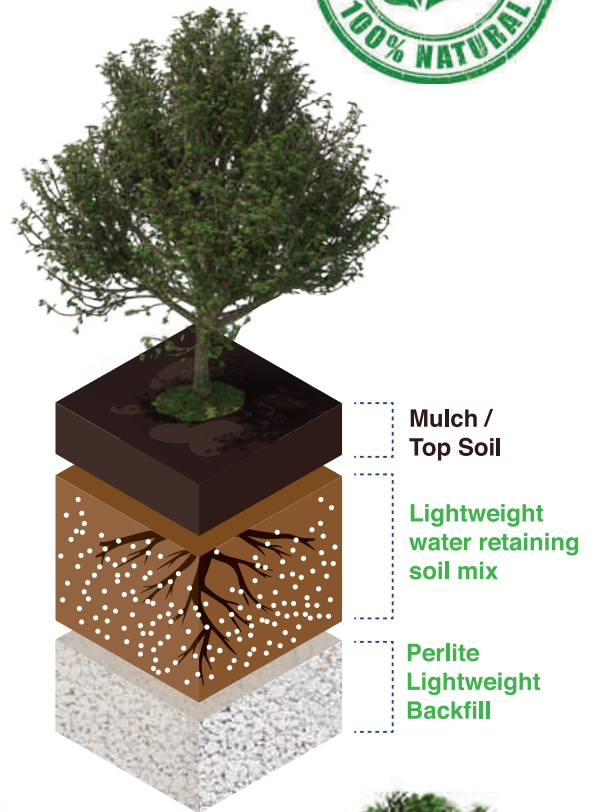


50

Perlite Lightweight Natural Mineral



- ✓ Perlite lightweight mineral (density 80 kg/m³) is an ideal solution for elevated planters and podiums to reduce soil weight.
- ✓ Reduction in irrigation requirements by minimum 50%.
- ✓ Acts as a natural irrigation buffer which supplies water & nutrients on demand through capillary action.
- ✓ Fights soil compaction & promotes natural aeration allowing healthy root systems.



NATURAL



LIGHTWEIGHT



INERT



SOIL
CONDITIONER



WATER
SAVING



MADE IN
UAE



Gulf
Perlite^{LLC}



P.O Box: 263275
National Industries Park,
Jebel Ali, Dubai - UAE

+971 4 8894 904 | +971 56 608 0223 | info@gulfperlite.com

Landscape Middle East Awards 2019



The Landscape Middle East Awards launched with a visit to His Highness Sheikh Dr. Sultan Al Qasimi as the first recipient of the Lifetime Achievement Award.



Ziad Amine, Managing Partner of Landscape Middle East magazine delivers the welcome address at the Landscape Awards 2019



The Landscape Awards 2019 dedicated to the late Dr. Musa Najib Nimah - Professor of Irrigation and Soil Physics, American University of Beirut



Abu Dhabi Municipality Won the Landscape Magazine Institutional Award during the Landscape Middle East Awards Ceremony. Delegates from Abu Dhabi Municipality (from left: Eng. Eman Mohammed Alkubaisi, Eng. Ahmad El Issaei, Eng. Hamad Muhsen Abdulla & Dr. Ammar Jarrar)



Dubai Municipality Won the Landscape Magazine Institutional Award during the Landscape Middle East Awards Ceremony (Eng. Talib Jufar, CEO – Infrastructure Service Sector, Dubai Municipality & Ziad Amine, Landscape Middle East Magazine Managing Partner)



Ms. Nada Abdel Khalek presenting the award to Mr. Ahmed Anoohi



Mr. Waleed Al Wahsh presenting the award to Dr. Jala Makhzoumi



Mr. Waleed Al Wahsh presenting the award to Mr. Jean-Claude Melone



Mrs. Mona Campbell receiving the award presented by Mr. Waleed Al Wahsh



Mr. Geoffrey Sanderson receiving the award presented by Mr. Waleed Al Wahsh



Mr. Nasser Ahmed presenting the award to Mr. Julian Lee



Mr. Nasser Ahmed presenting the award to Mr. Robert Shakespeare



Mr. Saleh Almusheikh receiving the award presented by Mr. Nasser Ahmed



Mr. Mark Hex presenting the award to Mr. Ara Khanoyan



Mr. Mark Hex presenting the award to Mr. Basem Al Shihabi



Mr. Rafael Khanoyan presenting the award to Dr. Maher Stino

Landscape Middle East Awards 2019



Mr. Rafael Khanoyan presenting the award to Dr. Laila ElMasry Stino



Mr. Steven Velegrinis presenting the award to Mr. Kiran Asher



Mr. Steven Velegrinis presenting the award to Mr. Yusuf Nalwala



Mr. Hanna Zaidan presenting the award to Mr. Isaak Al Diqs



Mr. Hanna Zaidan presenting the award to Dr. Kamel Mahadin



Mr. Ralf Stahl presenting the award to Mr. Ulrich Riederer the award of the late Mr. Richard Bodeker



Mr. Ralf Stahl presenting the award to Mr. Suheil Najjar



Mr. Ghassan Maamari receiving the award presented by Mr. Anas Alkilani



Mr. Anas Alkilani presenting the award to Mr. Ahmed Omar



Mr. Imad Daher Shaar receiving the award presented by Mr. Mohammed Saad Abunayyan



Mr. Jose Nascimento presenting the award to Mr. Philip Deeb



Dr. Salma Talhouk receiving the award presented by Mr. Jihad Kashkool



Mr. Nawfal Al Khudhairy presenting the award to Mr. John Arthur Davies



Mr. Fadi Gholam presenting the award to Dr. Bahget Hamooh



Mr. Aly Alezaby receiving the award presented by Mr. Fadi Gholam



Dr. Tarek Sobhy receiving the award presented by Mr. Khateeb Babiker



Mr. Yahya Al Kodmani receiving the award presented by Mr. Adnan Nalwala



Mr. Peter Harradine receiving the award presented by Mr. Adnan Nalwala



Dr. Mario Rossi presenting the award to Mr. Nakhle Sakr



Mr. Namir Muhtar presenting the award to Mr. Velimir Ljubibratic

Landscape Middle East Awards 2019





Landscape Middle East Awards 2019





Landscape Middle East Awards 2019





Landscape Middle East Awards 2019





Dubai Municipality concludes 26th 'Clean up the World' campaign

More than 200 public, private sector organizations join

Dubai Municipality on Friday concluded the 26th "Clean up the World" campaign with tremendous success, under the slogan "Beat Plastic Pollution" in Al Khawaneej-1 with the participation of 13,000 volunteers belonging to 204 public and private sector organizations and a lot of community members, who applied to participate in the various activities of the campaign this year, to make the most of the potential of these volunteers in the areas of cleaning, a commitment to promote social responsibility in the area of maintaining hygiene.

The activities of the volunteers participating in the campaign, under the supervision of the Dubai Municipality Waste Management Department, varied from collecting public waste from the specified sites, where means were provided for storing recyclable materials to benefit from them later. The volunteers also attended some awareness workshops and lectures on the site, which dealt with the importance of separating the waste from the source, and the plastic waste hazard, which is mentioned in the campaign slogan (Beat Plastic Pollution).

Students from the participating schools also joined in the competitions during the week-long days of the campaign. The campaign team also honored all participating educational institutions.

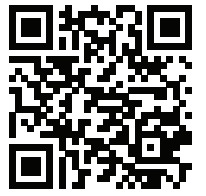
Eng. Abdulmajeed Saifaie, Director of Waste Management Department and Head of the Clean up the World Campaign, said: "Since its inception in 1994, the clean-up campaign has sought to raise the level of sustainable environmental awareness



Activities of 26th "Clean up the World" campaign underway

among the various members and segments of the society, emphasizing the importance of their role in the protection and development of the environment as both individual and collective responsibility. It is one of the largest volunteer campaigns in the region, with thousands of volunteers participating each year and their numbers are increasing year after year. In the last five years of the campaign, nearly 170,000 volunteers from different segments of the society, including citizens and residents, participated."

He added: "The Clean up the World campaign this year included special competition between government educational institutions to collect plastic containers and there were also lectures and awareness workshops for participants, especially students to spread the culture of reducing and sorting waste and highlighting the damage of plastic waste to human health and the environment. The winning schools will be honored in a special ceremony to be held at the beginning of the next semester."



THE FINEST TURF PRODUCTS



Adjuvant Spreaders And Wetting Agent

Fungicide

Granular Fertilizers

Granular Nursrey Fertilizers

Granular Soil Conditioners

Liquid Foliar Fertilizer

Nematicide

Post Emergent Herbicide

Pre Emergence Herbicide

Seeds

Soil Surfactant /hydrant/penetrant

Soluble Fertilizers

Turf Growth Regulator

Turf Professional Products

Water Ph Reducer And Buffering Agent

KIRNS



syngenta.



everris.



BEST

CALCIUM
PRODUCTS



PRECISION
PRODUCTS



SUSTANE
Naturally

Profile

CALCIUM
PRODUCTS

PURESEED

RAIN-BIRD

RAIN-BIRD



polycleanme.com | (+971) 4 33 88 226

Ground Floor, Polyclean Building, Al Quoz 3, behind Ajmal Perfume. PO Box 38149 Dubai, United Arab Emirates



The Quranic Park

Quranic Park receives one million visitors

Al Hajri: Creative initiative with a mission full of values, more than just a park

Dubai Municipality has celebrated the arrival of one million visitors to the Quranic Park since it opened in April, making it one of the most attractive parks for tourists in the region. The success of the project, which cost more than Dhs200 million, comes as a crown among the several successful tourism projects of Dubai Municipality including Dubai Frame, the largest frame structure in the world, which was also visited by two million people.

Dawoud Al Hajri, Director General of Dubai Municipality, said: "Opening of the Quranic Park coincided with the Year of Tolerance launched by President His Highness Sheikh Khalifa bin Zayed Al Nahyan, and in accordance with the directives of His Highness Sheikh Mohammed bin Rashid Al Maktoum, Vice-President and Prime Minister and Ruler of Dubai, it reinforces the cultural and civilizational role as the park contains cultural elements that bring civilizational interaction between different cultures and religions and shows the value of tolerance in Islam and in the UAE society."

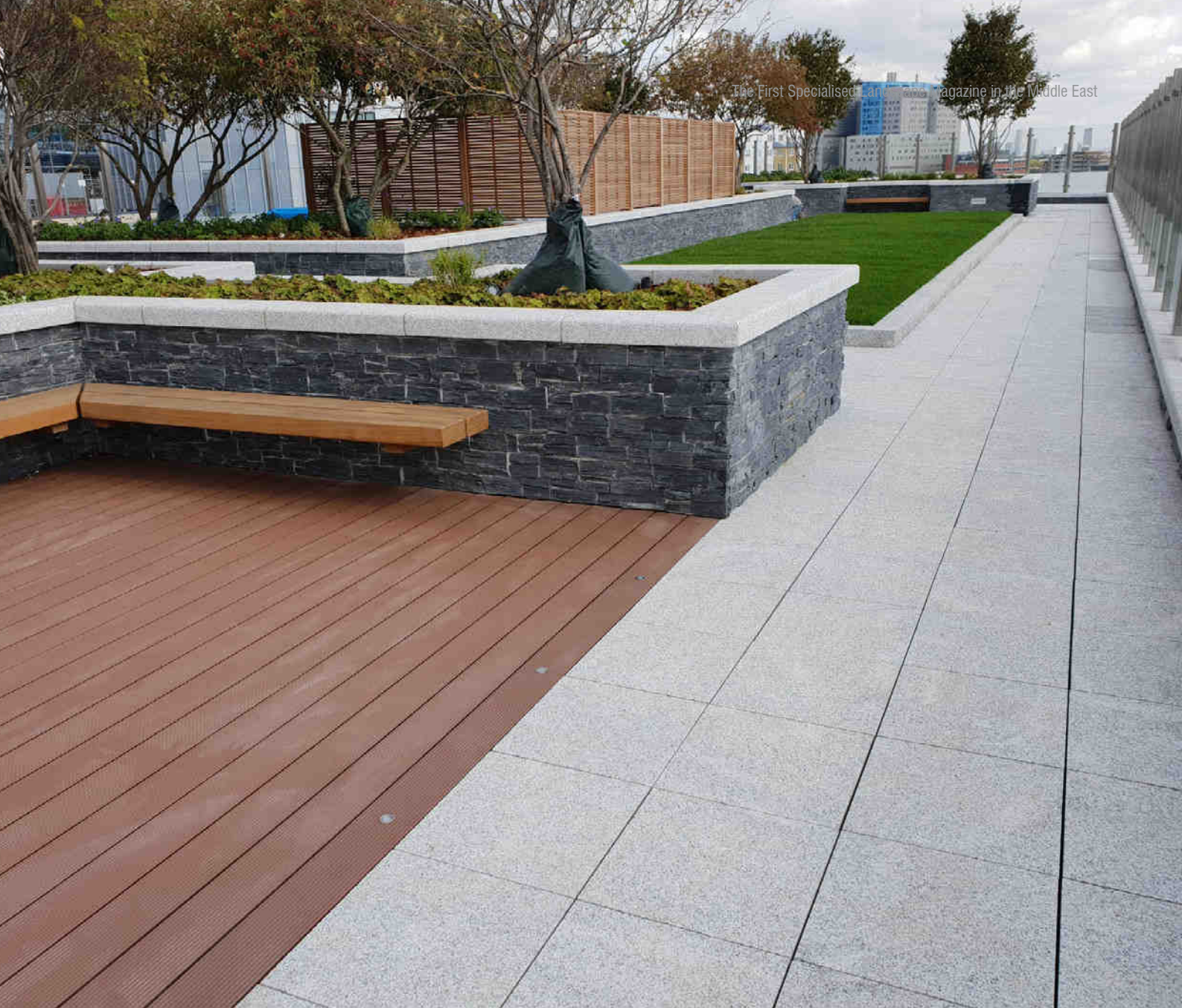
He added: "The Quranic Park is one of the creative initiatives of Dubai Municipality and we are all pleased with the success and great popularity it has achieved exceeding the number of one million visitors. We consider it more than a park and a place for picnic and recreation, but it carries a message full of spiritual values and religious and moral culture. The visitors, including the individuals and families, feel a sense of tolerance there. The plants, mentioned in the Holy Quran and the Sunnah, are spread over its various corners. It also explains the many miracles mentioned in the Quran and the Sunnah, in the context of an information environment, focusing on Islamic values based on the faith, tolerance, love and peace, and in an open place, radiating greenery and charming picturesque landscapes on an area of 64 hectares."

The Quranic Park, which is located in Al Khawaneej area, is the first major free park for visitors in Dubai as there is no entrance fee. A nominal amount of Dhs10 each is charged for those who wish to visit the Cave of Miracles and the Glass House inside the park.

The park consists of 12 gardens containing 45 types of plants mentioned in the Holy Quran and Sunnah, including bananas, pomegranates, olives, melons, grapes, figs, garlic, leeks, onions, corn, lentils, wheat, fennel seeds, ginger, tamarind, basil, pumpkins, cucumbers, etc. The Glass House contains the plants mentioned in the Holy Quran and Sunnah, which grow under certain temperatures and special environmental determinants. The Glass House features a distinctive architectural design at the highest point of the park, allowing visitors to see all its elements, in addition to a cafe surrounded by trees and plants.

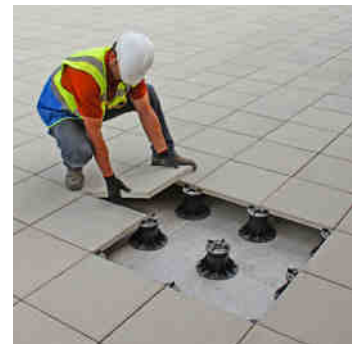
The park is surrounded by a low wall that reveals its beautiful features, a Moses Stick Miracle Lake and shops that sell herbs and plants mentioned in the Holy Quran. The park also comprises smart solar energy trees that are inspired by the art of Arabic and Islamic fonts, designed specifically for the park that also contains solar panels, Wi-Fi, and phone-charging stations.

The Cave of Miracles contains seven miracles mentioned in the Quran, displayed with the latest interactive screens with 3D technology using sound effects in Arabic and English. The park also includes several kiosks in all its gardens that display information on all types of plants and cultivated trees, the benefits of their uses in food and medicine, and the Quran verses they are mentioned in. The Times magazine has ranked the Quranic Park among the top 100 global destinations to visit because of its religious and cultural components in a large green spot.



smart strong support

Paving and decking support systems, with simple, effective design and incomparable strength.
For roofdecks, terraces, podiums and balconies.
www.rynogroup.co.uk



Exclusively distributed by
Tanseeq LLC
PO Box 28665, Dubai, UAE

call: 971 (04) 3617199
fax: 971 (04) 3607966
email: info@tanseeqllc.com

www.tanseeqllc.com



TANSEEQ

A member of the Tanseeq Investment Group of Companies



EAGLE HILLS SIGNS UP MGM FOR THE MAIN WORKS OF KALBA WATERFRONT IN SHARJAH

Eagle Hills Sharjah, a joint venture between Sharjah Investment and Development Authority (Shurooq) and Eagle Hills, has announced that it has awarded the contract for the main works of Kalba Waterfront in Sharjah to MGM Contracting LLC. The contract involves the architecture, infrastructure and landscaping of the mall, which once complete will offer residents and visitors of the emirate an integrated leisure and shopping destination, combining the convenience of modern shopping, leisure and recreation amidst the serenity of Kalba's natural lagoons.

Low Ping, CEO of Eagle Hills, said: "Eagle Hills is fully committed to developing a unique leisure and shopping destination in Kalba, Sharjah through an innovative retail concept offering advanced shopping facilities complemented with a variety of outdoor experiences. Our latest agreement with MGM is an important milestone to realizing this one-of-a-kind development, in line with our commitment to supporting Sharjah's growing tourism and leisure sector."

Kalba Waterfront will have a total built area of 20,000 square meters. It will feature a mix of retail, food and beverage outlets, a waterfront promenade and terraces, a supermarket, a large food court, as well as a family entertainment center. The mall will also offer outdoor dining venues, capitalizing on the breathtaking views of the natural lagoon to provide recreational activities for families and tourists alike.

Low Ping added: "With MGM's expertise in building high quality shopping centers, we are confident the company will deliver Eagle Hills' vision of a world-class tourism and shopping destination. The construction of the mall will be in-line with our international standards and will complement Sharjah's rich and natural heritage."

Kalba Waterfront is strategically situated at the edge of the stunning Kalba lagoon, which is part of the Kalba Eco-Tourism Project. The opening of the mall is set for the second half of 2020.



EXPO 2020



Attractive Greenery from Acacia

Acacia LLC is a reputed supplier of high quality natural plants, matured ornamental trees, specimen trees, matured tropical palms, matured olive trees, succulents, tall grasses, climbers, annuals, shrubs and ground covers for landscaping projects in the GCC.

Acacia LLC was established in 2008 and is based in Dubai, UAE. All trees strictly adhere to BS 3936 1:1992.



Dubai Arena



North Park - DSO



Mandarin Hotel Dubai

Acacia LLC

A Member of the Tanseeq Investment Group of Companies

Tel: +971 4 380 5595

Fax: +971 4 380 1717

info@acacia-ae.com

www.acacia-ae.com

BLUEWATERS RESIDENCES BY 10 DESIGN

REDEFINES ISLAND LIVING IN DUBAI

By: 10 DESIGN

Bluewaters Residences comprises 10 elegant mid-rise buildings providing 698 apartments, 4 penthouses, and 17 townhouses. The development offers a premium lifestyle with residential amenities including state-of-the-art gymnasiums, swimming pools, landscape gardens, basketball courts, and children's play areas.

In addition to creating an idyllic neighbourhood and community, Dubai-based holding company - Meraas is committed to create an immersive destination for the entire Bluewaters development, offering retail, hospitality, and entertainment experiences. This tourism hotspot is home to Ain Dubai, the world's largest observation wheel. It is complemented with a shopping paradise, housing unique retail and dining concepts and two world's leading hotels by Caesars Palace.

Design Partner, Nick Cordingley, says, "One of the key successful factors for the Bluewaters Residences is that we have been able to steer a challenge into multiple design opportunities. Due to the construction technique of the island, basement space is limited and therefore the design team introduced a 'podium' car park structure, which in turn lifted the residential ground floor 10 metres above the surrounding street level. The private realm of the residences could enjoy elevated views out to the ocean

and above the public realm of the surrounding streetscape. We also utilised the 'podium' structure to introduce townhouse typology along the western edge, providing living space with direct access to the water edge. The rest of the masterplan integrates arrival spaces to the main circulation spine and accommodates retail and F&B spaces to activate the 'edges' of the development, seamlessly integrating with the surrounding commercial streetscape."

Partner, Chris Jones, adds, "The development, positioned as one of the most iconic offshore developments of the 21st century, has sold well and is seen as an iconic living destination within Dubai – a success for Meraas and 10 DESIGN."

Beyond the above, easy accessibility is vital for any well considered destination. Bluewaters is within touching distance of Dubai Marina and is just a short drive from Abu Dhabi. The development is connected to the mainland by a direct road to Sheikh Zayed Road. There is also a 265 metre pedestrian bridge joining the island to The Beach by Meraas.

10 is also the design architect for the Bluewaters Mosque, which seeks to enhance its role within the community, encouraging design innovation while preserving Islamic architectural heritage. More details of the mosque will be followed.

Photo: 10 DESIGN





DESIGN

Detailed technical design and specification services to architects, consultants, engineers and developers.

MANUFACTURE

Fountain and swimming pool equipment, interactive nozzles, DMX controlled LED lighting and musical fountain systems.

SUPPLY

Fire features, fog misting systems, aeration systems, UV water treatment systems and water playgrounds.

BUILDING PLAYSCAPES OF THE FUTURE



Khalil Odeh Ali Shalan, Senior Vice President, Operations & Facility, Dubai Silicon Oasis Authority delivers a presentation at the 2019 edition of the Middle East Smart Landscape Summit

Cities are redesigning their public spaces to meet with the residents' requirements for today. Urban planners and landscape architects have designed strategies and implemented projects to encourage residents to engage with their surroundings. In Dubai alone, La Mer, City Walk, and Bluewaters are some of the most prominent urban recreational spaces developed over the last few years that have gained immense popularity amongst its residents.

As part of its strategy, Dubai Municipality is encouraging innovation not just within public spaces but also within the playgrounds and parks, thereby designing spaces that promote learning and development in conjunction with playing. Earlier this year, Dubai Municipality announced it will be 50 new playgrounds and squares for kids across the city. With the rapid urbanization of cities, urban planners and landscape architects have joined hands to incorporate green elements and develop urban playground designs that is in sync with the needs of today's children.

The goal is to build modern open, flexible and engaging playscapes that will benefit children and communities at large while keeping in mind the sustainable and safety standards that need to be maintained. Dynamo Playgrounds, a world leader in innovative playground equipment will be participating at the Middle East Smart Landscape Summit as a gold sponsor of the event yet again, and Rob Lockhart, Chief Compliance Officer from Dynamo Playgrounds will deliver a 20 minute presentation at the conference.

We have seen how the play environment has transformed over the last few years and the importance of creating playgrounds with learning opportunities for children. The importance on moving away from the traditional playground ecosystem to building playscapes that are not only designed for play, but on nurturing motor development in children features as part of the program agenda of the Middle East Smart Landscape Summit, being held in April 2020," said Mr. Brad Hariharan, Regional Director, Expotrade Middle East, organizers of the summit.

This two-day conference will bring together more than 45 international and regional industry experts and over 400 senior level landscape architects, landscape designers, urban planners, sustainability experts, engineering consultants, municipal and government officials from across the GCC region.

To know more about the event being held on 7th and 8th April 2020 at Sofitel Dubai The Palm Resort and Spa, log on to <http://www.landscapesummit.com>.

For more information, visit www.expotradeglobal.com

Email: marketing@expotrade-me.com

NATURAL PINE BARK SOIL IMPROVEMENT



INTERIOR DESIGN



RETAIN SOIL MOISTURE,
PREVENTING EVAPORATION.



REDUCES THE FREQUENCY
OF WATERING AND WATER
CONSUMPTION.



REDUCE MAINTENANCE COSTS
AND PREVENTS WEEDS FROM
GROWING.

LANDSCAPING

EXCLUSIVE DISTRIBUTOR



TANSEEQ

A member of the Tanseeq Investment Group of Companies

Tanseeq L.L.C

P.O. Box 28665, Dubai, U.A.E

Tel 971 (04) 3617199

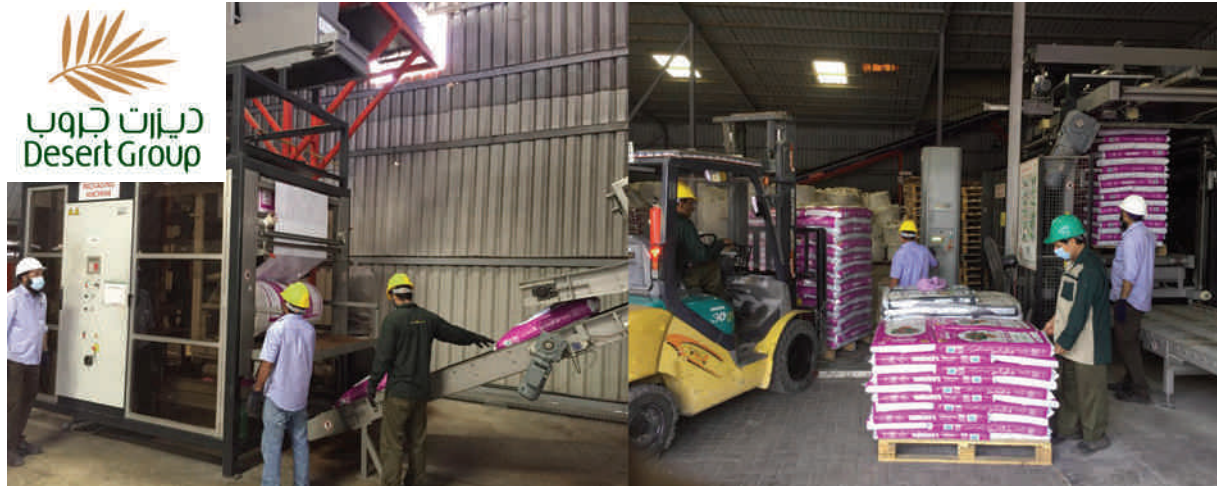
Fax 971 (04) 3607966

info@tanseeqllc.com

www.tanseeqllc.com



website



DESERT GROUP LAUNCHES ITS NEW FERTILIZER FACTORY

After being in the Soil Conditioner and Fertilizers production for almost 10 years, Desert Oasis Fertilizers Packaging LLC, a Desert Group company is going to start operating at their new, high tech production facility in Jebel Ali, Dubai this month.

“For years, our products have been a great solution for farmers, landscape contractors, and the professional turf market and the increasing demand from the local and regional markets for specialized high quality products made it almost inevitable to set up a new production facility. We are following the highest global standards, and undoubtedly will continue to serve large markets from this new factory.”

Mohan Natrajan, General Manager – Desert Oasis Fertilizers Packaging LLC.

The new factory is equipped with automated granular, powder and liquid fertilizers production lines, in addition to the potting soil production unit.

“We believe that it all starts with soil and what nutrient levels and formulations one has. We have studied and developed our products in a way that works best for our customers as the while catering to the extreme climate conditions in our region, such as high pH levels and the salinity of the soil.” **Salem Raju Boyi, Product Development Manager – Desert Oasis Fertilizers Packaging LLC.**

The new factory has 4 times the production capacity as compared with the old one and is expected to supply



ENERGY fertilizers to 9 countries within the MENA region.

The food agriculture market, within our region, has seen a noticeable growth. Keeping that in mind, many strategies have been implemented over the past years to increase green spaces and include the production of high quality fruits and vegetables, thus enhancing and promoting sustainability. **ENERGY** has devised new, eco-friendly, and customized products that minimize the use of harmful chemicals. These products supply essential nutrients to plants and induce plant defense response in them to tolerate stress caused by climatic conditions and infections pressure.

For more information and inquiries please mail us at: sales.desertenergy@desertgroup.ae





Grippler products
don't grow on trees...

... but they're now used
to secure them.



Above and below ground tree anchoring
systems for newly planted trees in rural
and urban environments, synonymous
with time-saving simplicity and problem
solving innovation.



TANSEEQ

A member of the Tanseeq Investment Group of Companies

Exclusive Distributor in the UAE

Tanseeq L.L.C, P.O Box 28665, Dubai, U.A.E

Tel : 971 (04) 3617199,

Fax : 971(04) 3607966

info@tanseeqllc.com | www.tanseeqllc.com



www.grippler.com

| GARDEN

MINOR PARADISES

*Reinterpreting the possibilities of garden design
in a world with limited water*

BY: CIVIL ARCHITECTURE
& STUDIOLIBANI

*Minor Paradises by Civil Architecture &
Studiolibani The Hangar Exhibition, Amman
Design Week 2019*

Below left & middle photo: "Minor Paradises, 2019 - Civil Architecture x studiolibani - The The Hangar Exhibition - Amman Design Week 2019 - Photo by Edmund Sumner"



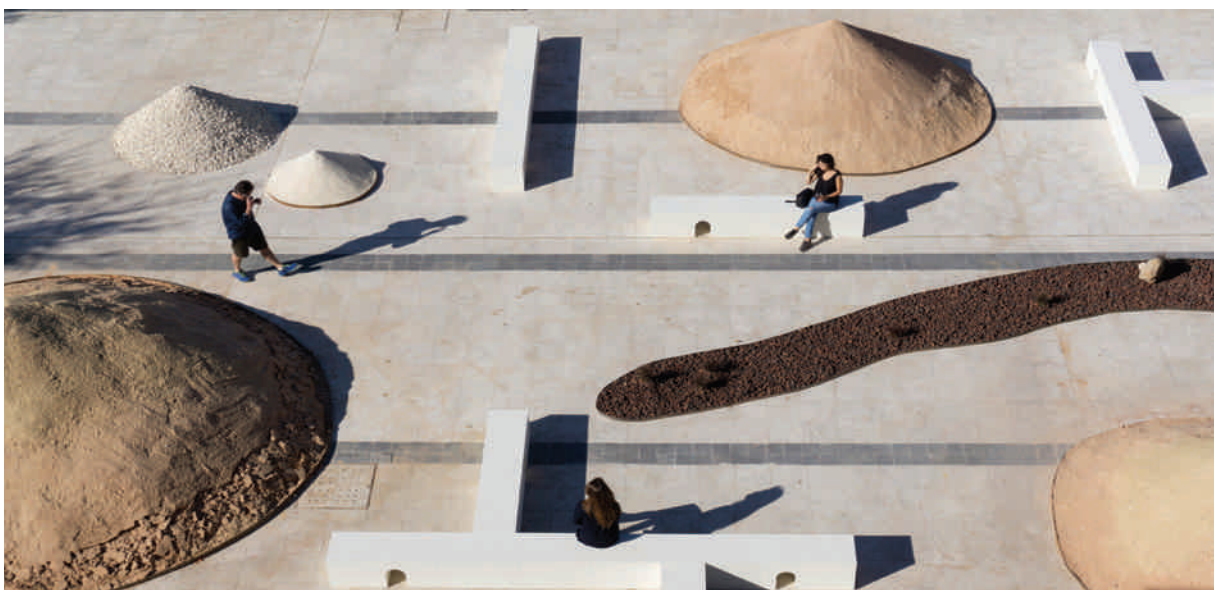
The public garden installation *Minor Paradises* took center stage during this year's Amman Design Week. The curator of this edition, Noura Al Sayeh Holtrop, commissioned Civil Architecture (a cultural practice in Bahrain-Kuwait) and studiolibani (a landscape architecture firm in Lebanon) to present a full-scale, week-long installation occupying 720 square meters (7750sq ft) of the entrance plaza at Ras Al Ain Gallery, under the theme 'Possibilities'.

In a reality where water is short, absent, or inaccessible, how do we begin to re-imagine our public spaces and the culture of collective life in the outdoors? How do we begin to re-imagine the idea of a garden under drought conditions, in contrast to a garden with its abundance of water and lush vegetation—itself a manifestation of Paradise.

The Middle East and North Africa is the most water-stressed region in the world. With the imminent impact of climate change - longer and more frequent periods of rising temperatures coupled with unpredictable rain patterns- the water crisis has reached unprecedented levels. Jordan ranks fifth worldwide in nations facing greatest water stress,

according to the World Resources Institute. In Jordan, aquifers are the main water supply. The over-exploitation of underground water primarily for agricultural production, combined with reduced annual precipitation levels (less than 50mm per year), poor planning, and a growing population, continue to diminish the replenishment of the aquifers, rendering the country under critical pressure.

Civil Architecture and studiolibani presented '*Minor Paradises*', intended as a series of provocations set against the Arab Paradise and against colonial notions of green. The Arab countries of the eastern Mediterranean refer to gardens as little paradises (jnaina): bounded boxes of green- delicate curation of plants in an ordered composition. Across the Arabian peninsula, on the coast of the Gulf, they are referred to as hadayiq, from the word, 'to bound or encircle'. In this context, the garden as bounded spaces of green was rare until the mid-20th century. Traditional courtyards were often barren - reserved for laundry, livestock and cooking. Greenery as an interior fantasy was reserved only for those who could afford the luxury of water that was spent on beauty

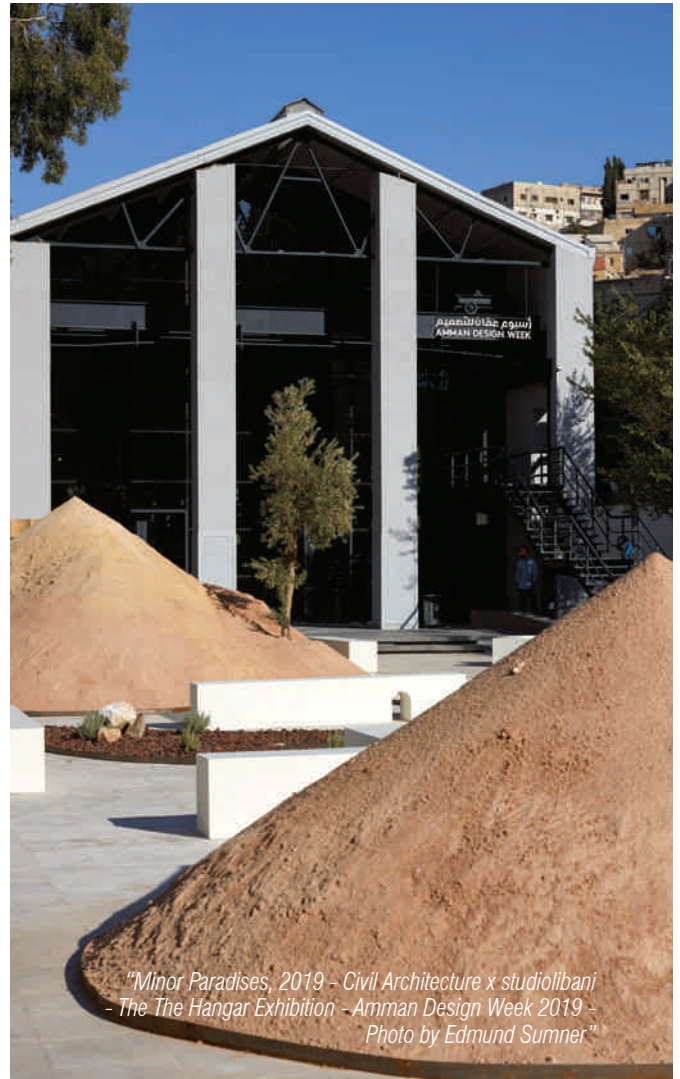


Minor Paradises by Civil Architecture X Studiolibani

I GARDEN

or cultivation. Minor Paradies revisits the traditional notion of the courtyard and the picturesque Jordanian landscape, and samples scenarios from the territorial scale re-interpreting it as a miniature landscape at human scale. Locally sourced sands, gravel, volcanic rock, and limestone recreate the landscape, construct topography and terrain conditions, and curate the visitor's experience towards the Ras Al Ain Gallery. The mound is perceived as a mountain or as a hill. The gravel patch as a surface, or as a territory; the limestone rocks as rock gardens or undersized rock mountains. The earthy materials connect the visitor back to the core elements of our landscapes. Mounds of earth material pushed beyond its limits or angle of repose form artificial geometries of varying heights and sizes, concealing and revealing views of this constructed landscape. Local adapted species of extreme drought tolerance appear as clusters negotiating a new, water-less aesthetic. The garden therefore suggests alternative notions of care, maintenance and beauty. The benches in white plywood reflect on the typology of the courtyard as a social space in the Arab world. The benches, laid out in different configurations, allow for interaction and expose different views towards this constructed landscape. Small arches in the benches further emphasize the fact that the installation is that of no scale.

As an exercise in managing scarcity, the construction of the one-week public park was made possible through the 'loaning' of sand, gravel and indigenous plants from local contractors and nurseries. The benches were donated to a nearby skate-park at the end of the Amman Design Week. The installation was supported by Amman Design Week and produced by Anas Al Mikhi and team.



"Minor Paradies, 2019 - Civil Architecture x studiolibani
- The The Hangar Exhibition - Amman Design Week 2019 -
Photo by Edmund Sumner"



Civil Architecture is a cultural practice preoccupied with the making of buildings and books about them. The work of Civil asks what it means to produce architecture in a decidedly un-civil time, presenting a new civic character for a global condition. Since its founding by Hamed Bukhamseen and Ali Karimi, the practice has attracted a strong following for their provocative works and their offer of an alternate future for a nascent Middle East.

www.civilarchitecture.org

Studiolibani is an agency of landscape architects and urban strategists, invested in alternative thinking in landscape architecture and urbanism. In their work and design research, the founders, Dima Rachid and Leah Moukarzel, focus on shaping resilient environments and crafting spaces of social meaning and ecological and aesthetic value. studiolibani operates from Beirut, Lebanon, across scales, systems, and geographies.

@studiolibani



Permeable Resin Bound Paving



TANSEEQ

A member of the Tanseeq Investment Group of Companies

Tanseeq LLC are Global Partners for SureSet in the UAE

www.suresetpaving.com

T: 971(04) 3617199

info@tanseeqllc.com

www.tanseeqllc.com



Interview with Sajid Kagadi

Business Development Manager
GreenKeeper Landscaping & Irrigation
Works LLC. Dubai, UAE.
www.greenkeeperuae.com

Define 'good landscaping' and what benefits does it have on our wellbeing?

A well-designed building without any landscape reflects a sense of incompleteness. The environment in which we live affects our productivity levels. Landscape areas provide spaces where people can unwind, relax, socialize or exercise.

When we think of the word "Landscape", palms, trees, shrubs, ground cover, lush green lawn, flowers come to our mind. Good landscaping around the house is an indicator of how well the home has been cared for.

Landscapes should not just be planted to look beautiful, they should also serve multiple functions like creating habitat, creating microclimates, fixing nitrogen into the soil, cleaning the air, and producing food. When trees are planted and well maintained it can significantly absorb sound waves and reduce noise pollution.

Green spaces have psychological benefits and directly contribute to a person's general wellbeing as a whole. In these green surroundings, usually feelings of fear and anger are reduced and overall positive feelings increase. When trees are properly selected, and planted



in the right direction, it results in lowering heating and cooling costs. A beautiful frontal area is always an added advantage as it gives you a cool and peaceful atmosphere. A well-maintained landscape also increases the property value.

Does landscaping help to increase the value of your property? To what extent does good landscaping have an impact on the asset value?

A carefully planned landscape design using quality plant material not only reflects a work of art but it is also a property investment. The benefits of landscaping can be maximized when certified landscape professionals are involved in all aspects including design, site preparations, plant selection, landscape lighting, installation and maintenance activities.

A general rule of thumb, in a mature real estate market, is that landscaping yields, on an average, a 109% return on every dirham spent. People like to know that the property they invest in, is consistently improving in both perceived and actual value. Landscaping can increase the resale value of a property. Potential buyers are more interested in properties with a combination of well-designed hard and soft landscape. A beautifully constructed outdoor space with fascinating landscape design can enhance the beauty of your property. This can significantly increase the value and help the sale of the property faster than a similar one without landscaping.

What are your top tips to construct landscaping that helps to increase property value?

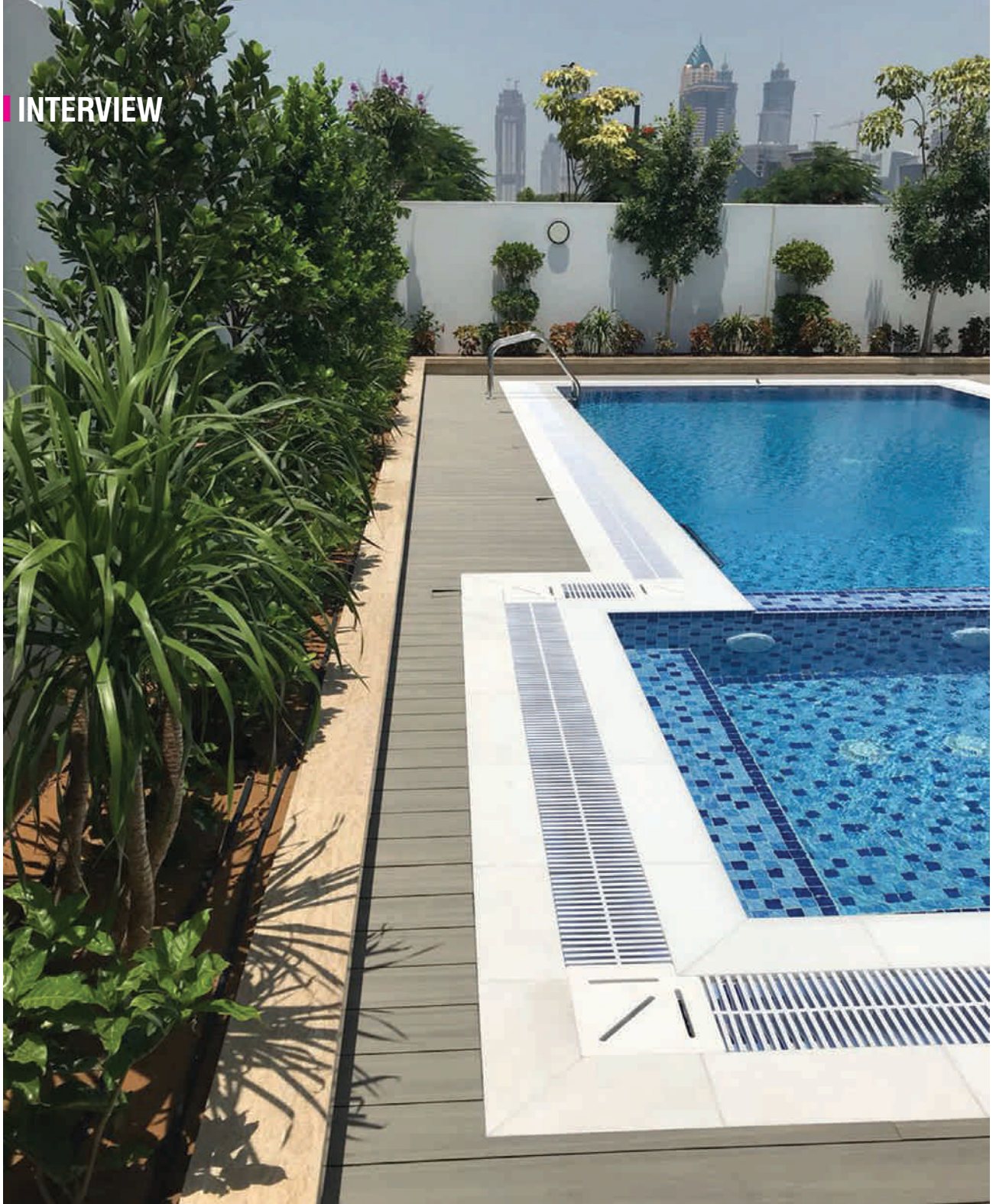
Your landscape design not only accentuates your premises but also reflects your brand. It is an expression of your vision and definitely increases the value of your property. Outdoor living spaces are becoming extremely popular, they provide the comfort of the indoors with the additional advantage of fresh air and a great view. It's easy to create an outdoor living space in your backyard garden with luxurious furniture and a bbq area. The result



is an intimate living area that can be used for relaxing or entertaining.

A small backyard doesn't mean that you need to compromise on adding greenery and plants. One of the most effective design ideas includes vertical gardens - making use of your outdoor fences, walls or railings to hang plants, herbs and more. You can showcase your landscape art by having green walls that offers attractive greenery without the need for more space, it also will benefit your soul!

Water is a key feature in a backyard landscape design. A fountain or small water feature gives a soothing sound and makes the area a comfortable place to sit and relax. Outdoor lighting can be easily installed by use of solar powered lights. You can design a xeriscape with different colored gravel/pebbles/rocks and drought-tolerant plantings. Stock your yard with xeriscaping plants to create a landscape that blends beauty with minimum water consumption. Potential buyers are more interested in such economic to low cost maintenance landscape designed properties.



What are your client's demands in the UAE when it comes to landscaping?

A new trend has been emerging in the UAE with more demand for sustainable and economic designs with heat loving plants which can work in harmony with the surrounding landscape and will have lower requirements for water.

What other advice do you have to home owners looking to maximize their outdoor space?

Use plants that are weather-tolerant. Many soil additives can also be used to increase the water holding capacity; plenty of drip irrigation technologies

can be introduced for reducing water consumption. Grass can be hard to maintain in the UAE, especially during the hot summer months. If you have a large garden, and want to save water and money, consider installing artificial grass. It's much easier and cheaper to maintain. If you have real grass, then make sure to water it at night so that less water evaporates during the daytime heat.

Mulch can be used to retain moisture in the soil, suppress weeds, keep the soil cool, and make the garden bed look more attractive. Organic mulches are also available that help improve the soil's fertility, as they decompose.

Avoid planting fast growing *Conocarpus* (Damas) trees along the boundary walls as the vigorous root system may cause structural damage to the building and block irrigation and drainage pipes.

During winter, the shrubs and groundcovers will sometimes show signs of dormancy and most flowers, especially *Bougainvillea*, will start to dry out and drop. Most of the hedges and beds will be a monotonous green at this time, all just biding their time to flush out in full color again in March and April. So, if you happen to notice that plants that have been trimmed do not show any signs of life, do not be alarmed, just be a bit patient and you will be rewarded with fresh and healthy new growth.

The lawn areas will all be fairly slow growing and do not need the weekly mowing as required during the hot summer months. Since the plants are fairly slow growing, it is not recommended to do any major or heavy trimming at this time. Light trimming, light thinning and corrective pruning are the only practices that is advisable at this time.

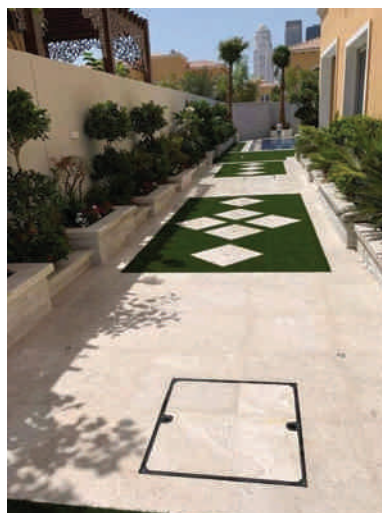
It is not generally advisable to do major plant pest control as most insects and fungal pests are semi-dormant during the winter months. Do look out for mealy

bugs and other sucking insects that may be hiding under leaves or in the thickets of the plants where they are protected from the cold. If they are observed, it is good to do the necessary treatment and it may also prevent any major outbreak once the season heats up.

Do be careful not to overwater the gardens. The plants do not absorb as much water during the cooler seasons, so this may lead to excessive algae growth or soil compaction due to water stagnation. Living in desert with drastic climate change and water scarcity, we need to start looking at indigenous plants because, obviously, they are the native ones. This is their habitat, after all, and therefore these are the plants we should start using, like the Ghaf tree which is the symbol and main highlight of the Year of Tolerance.

Hire a professional landscaping service in the UAE to revamp your garden.

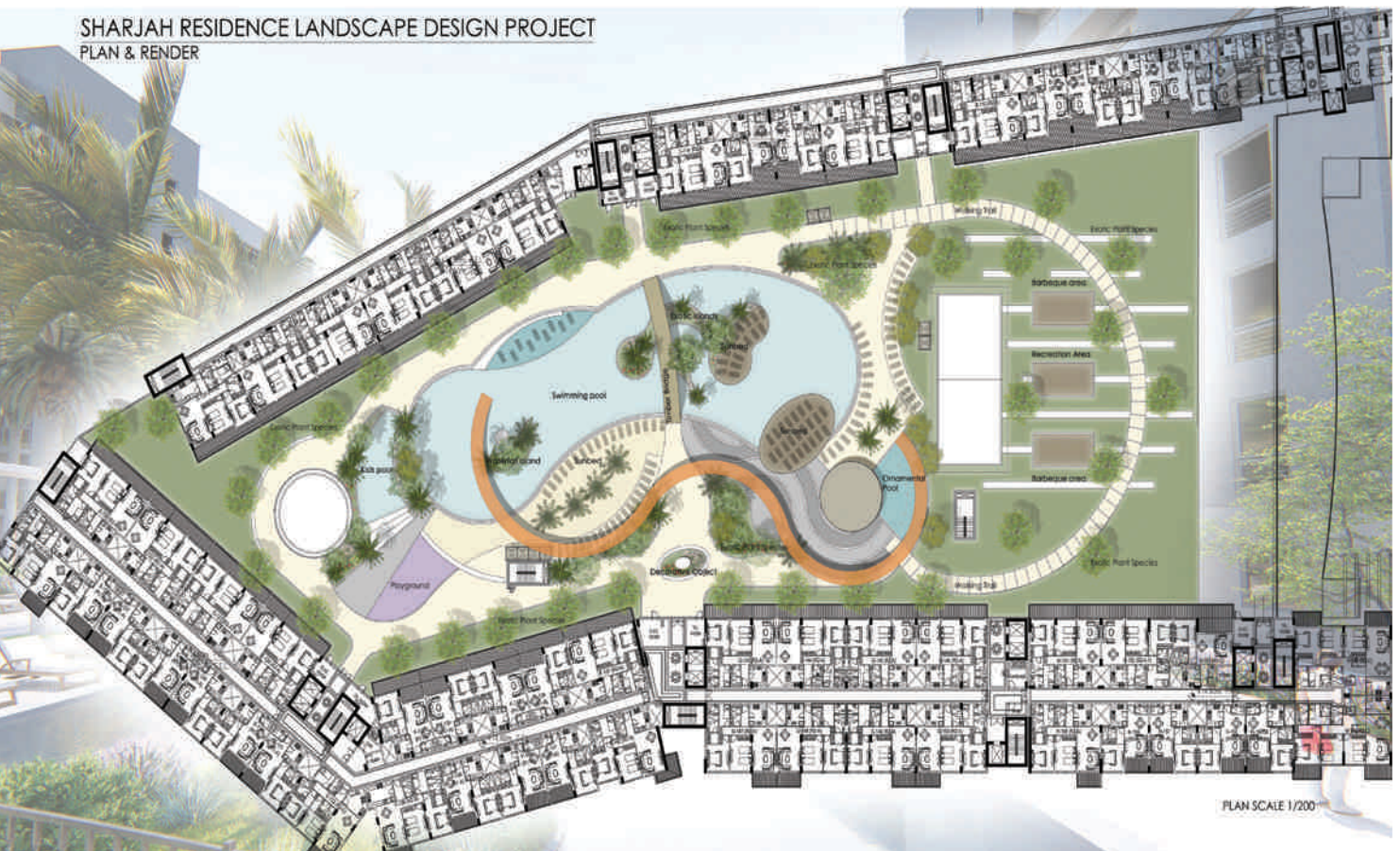
We at GreenKeeper Landscaping & Irrigation Works LLC. strive to make your landscape aesthetically pleasing and hope that the information provided here will be beneficial to best keep your garden healthy, green and become a valued asset for your property.



DESIGNING OPEN SPACES

Turkish company, Orientalis Landscaping shares their insight from a recent residential project in Sharjah.

By: Merve Ersan & Louise Julio Caraca





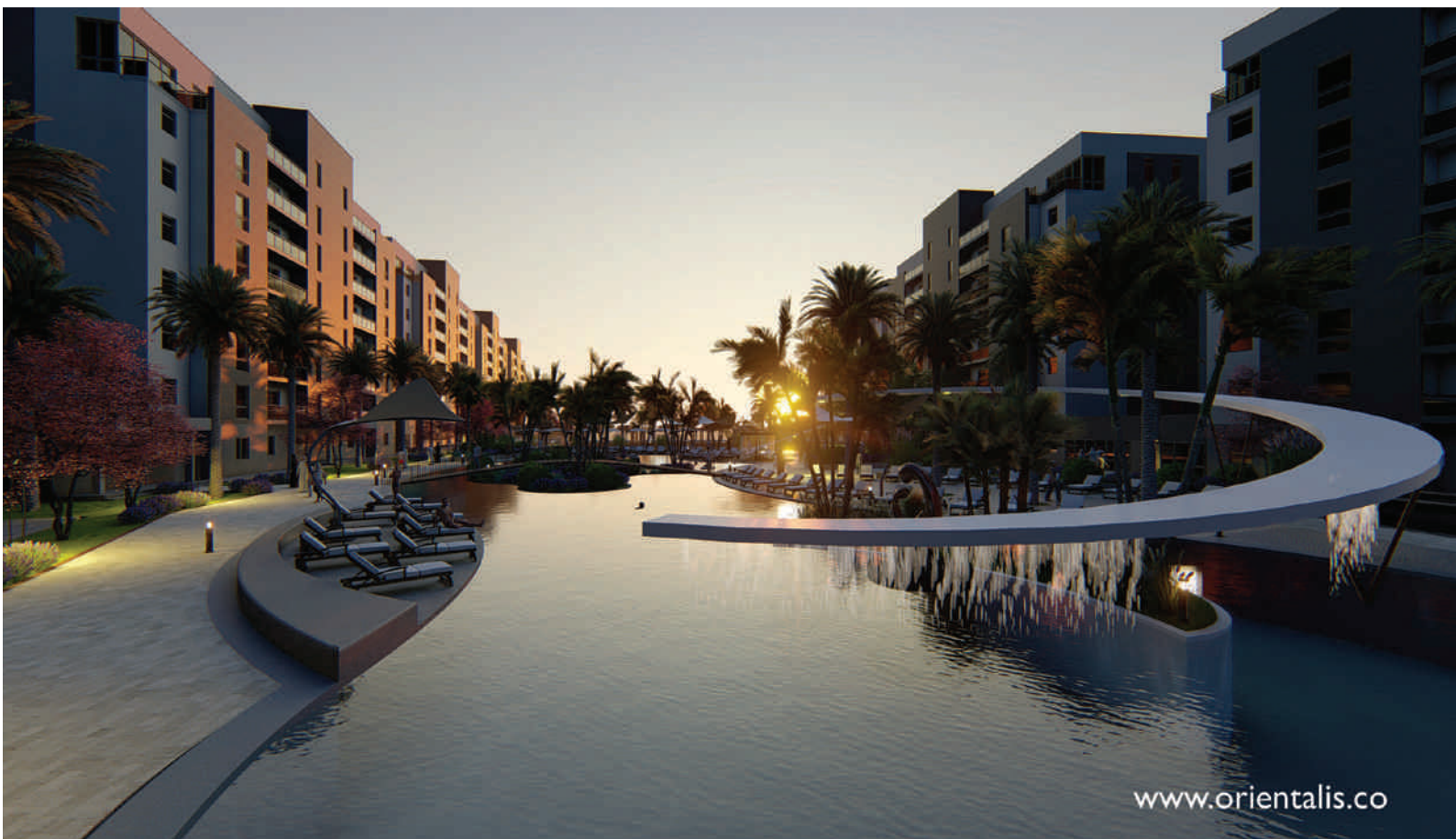
Research suggests that residents living within community compounds in the region prefer to live and visit places with a family-friendly feel, have the highest safety standards and state-of-the-art amenities for outdoor recreational activities.

The initial stage of an open space design is very crucial. In this project, our design focuses on the courtyard, which is the focal point of the open space, creating a feeling for the community not only for relaxing but also for the efficiency of the area. We designed a pool being on an island, surrounded by natural greenery and shade from

the trees, which creates a thermal comfort and an integrating water feature to allow residents to feel closer to nature.

The courtyard is separated into three zones. This is to provide a sense of scale of purpose with a theme of “Living in the Courtyard”. A relaxing and multi-zoned residential garden designed to encourage outdoor living. It includes a playground area, shading areas, gathering areas, outdoor cooking, pool facilities, mini aquapark and sports activities for the residents.

The First Zone is designed for the pool area. It is centralized and formed by a natural



| SUSTAINABLE LANDSCAPE



curvilinear line for the island and includes a spacious deck area around the pool. It portrays an enriched design for green areas and sunbathing areas. Our pool design is considered as a social reinforcement that is easily accessible to all users of the residential area.

The Secondary Zone is more of a hardscape area which is designed for walking, gatherings and sunbathing. This outdoor design specializes in natural stone flooring, together with outdoor furniture and the idea of water features. Our design is made with innovative products that possess an organic aesthetic that transcends styles, utilizing shading structures and lighting structures.

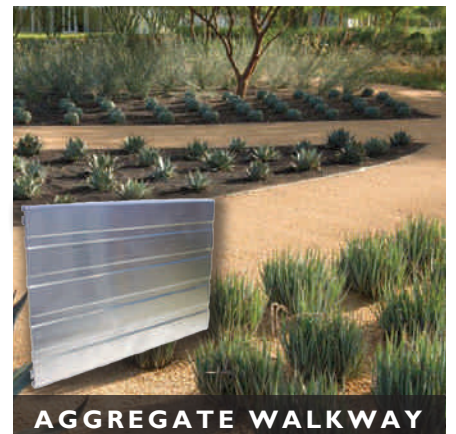
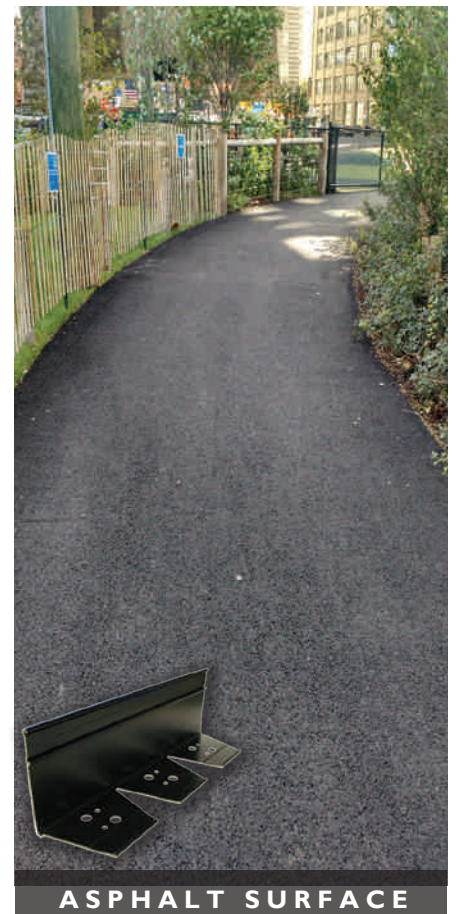
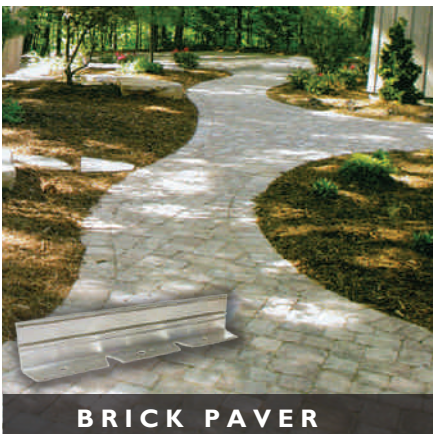
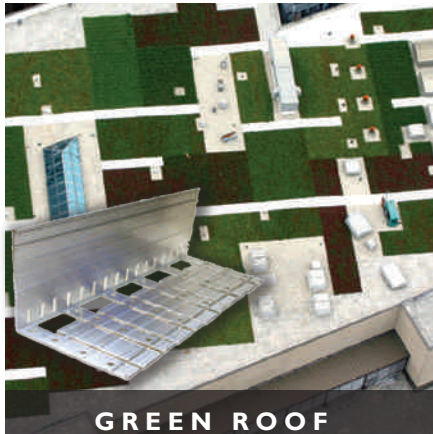
Lastly, The Third Zone is designed for residents to enjoy lawn areas and barbeque areas. This design encourages the family to intact and spend quality time with each other.

THE SHADING, LIGHTING and WATER FEATURES

The shading structure is the architectural element that makes the place attractive in the third dimension. It is developed in the longitudinal direction of the square and is considered to be executed by CTP material, using solar energy and a water feature. The color used is white which suites the design of the landmark buildings and the surroundings.

These principles define a space that is separate but receptive to the architectural frame. The courtyard receives light generously provided by the building's lowered southwest corner, and in return, its path reaches into the structure, connecting to internal arteries and areas in a symbiotic dialogue of space.

By this, the courtyard has become the center of life. In addition, the light mass is aimed at the flexible use and transformation scenarios were also considered.



DISTRIBUTED BY:



TANSEEQ

A member of the Tanseeq Investment Group of Companies

tanseeqllc.com
info@tanseeqllc.com
+971 4 3617199

A project is defined by its lines. For over 30 years, Permaloc has dedicated itself to developing **edging and restraint products** that assure your project's edges will be sustained for its lifetime.

Permaloc offers **13 application-specific product lines**, assuring we have a product to match whatever your need. With **flat edgings** from 3" to 12" in height, and **"L"-shaped edgings** from 1" - 8.5", both available in a **variety of thicknesses**, our products will meet all of your edging needs.

Permaloc provides the highest quality aluminum products for use in landscape, hardscape and green build.

Find us at **permaloc.com** or contact us at **1.616.399.9600**



Landscape Bed • Maintenance Strip • Aggregate Walkway • Brick Paver • Permeable Pavement • Asphalt Surface • Sports Surface • Green Roof



A Pakistani family home that blends and ages with the landscape

By: Israr Ahmed
Landscape Architect



This is the dream home for Mr. Y K and his family, he has fairly traditional tastes but was open to new ideas for the design. Treeline Designz created an inspirational garden that blends well into the surroundings - making it look like a natural part of decades old flora and fauna of Islamabad. The design aimed to adapt the house to the environment and achieve excellent views of the lush green neighborhood.

The lawn in front of the house is ideal as a play area for children, a large araucaria, palm tree and scanted murraya exotica trees retained from the original garden are now the focus of the main garden. A black slate stone deck was created underneath to relax, enjoy and praise the comforting sound of the swaying trees and brisk breeze which seem to be always in deep conversation with each other.

The entrance warmly receives the family back home after a hard day, and blesses them before they leave for their daily activities. Most of the materials were chosen for their ability to engage with natural processes so that rusting, fading, wearing and decay could add their unique charms to the character of metal, stone and timber. A highlight of the interior design is white porcelain tiles on the floors, so we extended them out into the courtyard to create a sense of continuity between

RESIDENTIAL LANDSCAPING



inside and outside. While walking through the main entrance of the house the sound of water surrounds the visitor and one can see the melting bowl challenging them to interact. A similar experience envelops when entering the courtyard, you find yourself wondering. The composition of light and

sound of water incorporated with the Chinese tallow tree, the famous autumn tree of Islamabad. In short, the outdoor areas of YK's house are perfect to relax and unwind after a hard day at work. Unquestionably this project's success lies in the client's continuous patronage throughout.



Project: YK House

Type: Residential landscape

Architecture: Mohammad Saifullah Siddiqui
(DB Studios, Islamabad, Pakistan)

Landscape Design: Israr Ahmed Treeline
Designz Lahore, Pakistan

Landscape Contractors: Abrar Bilal B&Y
Landscape contractors, islamabad

Photography: Rafay Anwer

Location: Sector F-6, Islamabad, Pakistan

Email: treeline.designz@gmail.com

Contact number : +92-300-8839900





Ventana LLC is proud to announce the addition of **Rain Bird's** range of residential irrigation products.



Ventana LLC is the authorized distributor of Rain Bird's Residential products in the UAE

Rain Bird's intelligent irrigation products are renowned for their quality, innovation and durability.

Rain Bird has cemented its market leading position by offering cost effective, reliable and sustainable products which increase water efficiency and support the environment.

Ventana LLC and **Rain Bird** will help consumers to significantly reduce their outdoor water usage and continue to enjoy the many benefits that green spaces have to offer.



For more information please visit www.ventanallc.com

✉ info@ventanallc.com

Ventana LLC | P.O.Box: 127822 | Dubai | UAE.

Tel: +971 4 323 1603 | Fax: +971 4 380 6957

A member of the **Tanseeq Investment Group of Companies**



Once home to the 1967 Expo world fair, Montreal's iconic Parc Jean-Drapeau is transformed by designer Lemay

RECREATING THE MAGIC OF EXPO 67

By: Lemay

Over a half-century after 50 million visitors first discovered Montréal's iconic Parc Jean-Drapeau when it played host to EXPO 67, the site now known as Espace67 has had a total makeover by transdisciplinary designer Lemay.

The firm brought its unique brand of design to rethink, restore and reshape this major contemporary project in the southwest sector of Île-Sainte-Hélène with a vast redevelopment project.

Defined by a whimsical new Central Concourse linking the island's Biosphère to Alexander Calder's monumental Trois disques sculpture, the transformed multi-functional site now features a 65,000-seat natural amphitheater as well as a riverside walkway. The project also introduces an Event





Village and Natural Agora, eloquent public spaces that can accommodate a variety of functions year-round.

“Lemay’s concept blends the enchanting natural setting and rich historic past of this exceptional site, to offer a truly versatile space,” said Andrew King, Partner and Design principal at Lemay. “It has been reborn as a destination unto itself, now able to fully accommodate a wide range of major events.”

EXPO 67

With its record-breaking number of visitors, the 1967 International and Universal Exposition or EXPO 67 was the most successful World’s Fair of the 20th century. Held for



photo - marc cramer.com

six months in Montreal with 62 nations participating, the exposition afterward remained as a standing collection of international pavilions known as “Man and His World” on the two islands hosting it: Île-Sainte-Hélène, which had been greatly enlarged, and Île-Notre-Dame, which had been entirely created for the event. EXPO 67 is still fondly regarded as a social, cultural, political and technological landmark moment in Canadian history. The revitalization of the site was a legacy of the City of Montreal’s 375th anniversary in 2017.

The concept

Recreating and building on the site’s original signature, Lemay successfully met the project objectives to recreate the spirit of EXPO. By integrating landscape and building architecture, urban design, brand image and signage, the firm created a new attraction in harmony with nature and culture, revealing the site’s genius loci, which is derived from its riverfront character, its stunning views of the city, its historical significance and its diverse vocations.

With its integrated design approach, Lemay developed a meaningful adaptive reuse and holistic design strategy to create an original user experience via enhanced reception services, flexible event spaces and improved visitor orientation for this unique site connecting the island’s north and south shores. It sculpted the space into a geometric pattern defined by inclined planes and the iconic central pathway, which now maximizes views of the Calder sculpture. The latter draws visitors from the metro into the site with its distinctive seating areas, greenspace and breathtaking views of downtown, Old Montreal and the St. Lawrence River.

In addition to improving visitor circulation, the redevelopment showcases the quality of the existing built and natural environment and makes architectural references to the site’s celebrated history, reviving the festive, unifying spirit of EXPO 67.

The service pavilions near the site’s entrance and metro station signal its vocation as a celebratory venue. Their





Designed to inspire. Engineered to last.

When it comes to life outdoors, nothing outperforms the world's #1 outdoor living brand. Only Trex® is engineered to eliminate time-consuming maintenance while providing superior scratch, fade and stain resistance. So when the time comes to build your next deck, make sure it's Trex. To learn more, visit trex.com/ae.



Engineering What's Next
in Outdoor Living®

Exclusive Distributor in the UAE



TANSEEQ

A member of the Tanseeq Investment Group of Companies



envelopes' shape and treatment, which integrate with the landscape interventions, echo the vocabulary of EXPO 67. The pavilion roofs follow the geometric pattern of the pavers in the central aisle, inspired by the triangular architecture of Buckminster Fuller's geodesic dome, now known as the Biosphere. This triangular design is reproduced in the floor of the amphitheater as well as in the perforations of the surrounding walls.

The pavilions' volumes, materiality, façades and lighting make them key wayfinding elements that guide visitors through the site's experience as they fulfil reception, information, restaurant and administrative functions. Their positioning also facilitates crowd management during events.

The amphitheatre covers a huge area but can be adjusted to accommodate events of different sizes while offering an inviting, interesting space when not in use. The triangular pattern of the paving stones recalls the predominantly

geometric shape of the Terre des Hommes era, evident for instance in the structure of Buckminster Fuller's geodesic dome, now known as the Biosphere.

Lemay's thoughtful and strategic integration of nature, culture and site memory has created another unique urban destination, enhanced by a landscape signature highlighting the majestic river, spectacular urban and natural panoramas and the multifunctional vocation of a treasured site.



Credit to: v2com newswire
 Technical Datasheet
 Project Team
 Lucie Saint-Pierre:
 Landscape Architect, Project
 Director
 Andrew King: Lead Designer
 Mylène Carreau: Landscape
 Architect, Project Manager
 Patricia Lussier: Landscape
 Architect, Design Manager
 Pierre E. Leclerc: Architect,
 Design Manager





DSO NORTH PARK

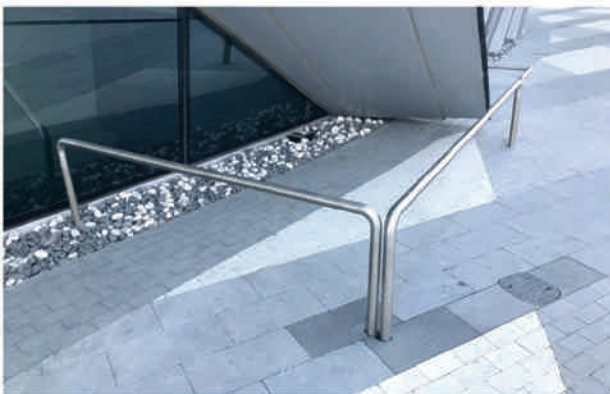


Metaline LLC specializes in the design, supply, fabrication, and installation of architectural metal, alloy, glass and fabrics elements.

The company employs state-of-the-art precision machinery to deliver high-quality products, such as: hand rails, balustrades, fencing, mashrabiyya screens, pergolas, planters, shade structures and custom urban furniture.



Taj Hotel Dubai



Dubai Arena



Dubai Creek Harbour

Metaline LLC

A Member of the Tanseeq Investment Group of Companies

Tel: +971 4 2243369

Fax: +971 4 224 9786

info@metalinellc.com

www.metalinellc.com

HEALTH CAMPUS

Photo: Robert Frith



Resourceful planting and irrigation are helping this new civic landscape thrive in the harsh climate of Australia's Pilbara region.



Photo: Robert Frith

KARRATHA HEALTH CAMPUS FROM BARON SANDPIT TO RESTORATIVE OASIS

By: Hassell

Photo: Robert Frith





Photo: Robert Frith

The A\$207m Karratha Health Campus – Western Australia’s largest ever regional health infrastructure investment – is transforming health services for people living and working in the country’s remote north-west. Hassell designed the public health facility, including the campus’ expansive landscape that enhances the hospital environment, provides respite for patients and their families, and extends Karratha’s green links through to the city centre.

The landscape was designed alongside hospital staff, the City of Karratha, and the traditional ‘Ngarluma’ landowners to create a civic place where the whole community feels comfortable and protected, says Natalie Busch, Principal at Hassell.

But designing a sustainable landscape for Karratha was particularly challenging, says Busch; as the town experiences, all extremes in weather and conditions. From high temperatures, humidity and at times torrential rains, to bone-dry soil, and even cyclones.

“With these impacts in mind, we designed a hospital campus that’s ‘bulletproof’ and self-sufficient in terms of essential

services and maintenance. A landscape that can not only survive fluctuating conditions, but – through its strategic design – actually helps protect this vital community asset during extreme weather events.”

“One year since completion, and having endured category five Cyclone Veronica, the landscape continues to thrive,” Busch said. Innovating to sustain plant life in a water-scarce environment. In the semi-arid Pilbara, any civic landscape lacking sufficient planting and shade is destined to fail, but water for irrigation isn’t readily available. Karratha’s groundwater is brackish, the rainfall’s unreliable – essentially the site pre-development was a barren sandpit.

To solve this problem, Hassell developed an innovative irrigation system with LD Total and Wood & Grieve Engineers that captures condensate from the hospital’s air conditioning units and backwash from its reverse osmosis system and stores it in underground tanks for reuse. It collects up to 30KL of water each day during the hottest months – the volume of a backyard swimming pool.



HEALTH CAMPUS



This irrigation system now sustains the hospital's public and internal landscapes, enabling the growth of restorative green spaces that create a tempering microclimate in and around the building.

The overall landscape design emerged from a precise water-availability to plant-requirements calculation, with the maximum sustainable plant life then grouped into two broad hydro-zones, including:

Intensive zones – requiring more water, including the courtyards, tree-shaded pathways and community lawns. These areas feature a combination of native and locally-proven tree species with wide shade canopies, like the mature frangipani trees that were transplanted from the city's former hospital site, and Tipuana Tipu

Extensive zones – requiring minimal water and virtually no maintenance. These areas around the hospital's perimeter grow lower-density native species and trees, such as 'Murlumurlu' (Mulla Mulla) and pioneer grasses. Ribbons of gravel weave through this sparser, textural planting – reflecting the natural Pilbara landscape. Using native plants and materials for inbuilt resilience The hospital design draws out the inherent vibrancy of the land through its rich colour palette and use of local plants and materials. Durable selections have created a resilient landscape environment that can withstand tough conditions, while offering comfort.

Crushed Wickham gravel, Karratha stone paving and weathered boulders sourced from a nearby salvage yard were used, minimising transportation. Cool-to-touch aluminium furniture, corten steel edging, steel shade elements and concrete paths all require little ongoing maintenance.

Plants native to Western Australia have been selected for their salt tolerance, low water requirements and proven ability to thrive. Over 150 Eucalyptus Vitrix provide shelter – trees known as 'Yamarrara' by the Ngarluma people – and a carpet of wildflowers appear like an extension of the floodplain. These flowering plants with fibrous root systems, such as 'Thurla marda-marda' (Sturt's Desert Pea) and Acacia species, are planted along the landscape's overflow routes, helping to stabilise the soil. Gabion terrace walls stacked with local granite step gently down towards the surrounding streets. They're positioned to break down the velocity of storm water protecting the building from flooding and torrential rain and preventing damage to the streetscape and roads.

A connected, community health campus taking cues from traditional culture

Karratha Health Campus creates a connection between the hospital and the surrounding environment – inviting interaction, promoting health and providing welcoming amenity for the entire community.

Within the building, three double-volume landscaped courtyards at the hospital's entries provide lush oases with a calming, green vistas for relaxation and respite. Externally, a series of 'landscape moments', shaded by trees or shelters, offer distant views to the Burrup Peninsula and Karratha Hills. These garden spaces offer patients, staff and visitors 'a moment to escape' and take in the landscape – which is proven to reduce stress, and improve health and clinical outcomes.

Overall, the project reflects a collaborative journey underpinned by a genuine desire to understand place as well as serve the community, says Busch.

"We consulted with local Aboriginal communities and elders who have used plants such as the 'Mulla Mulla' which is an important ceremonial plant for the Ngarluma people, and we've continued to tell these stories across the landscape and in the shelter spaces as well," she said.

The shelters en route to the hospital's main entry feature artwork panels explaining how the plants around the hospital are traditionally used by the Ngarluma to treat illness. According to Wanggalili Yindjibarndi and Ngarluma Plants, a guide published by the Juluwarlu Group Aboriginal Corporation, 'Bibarn' (the Green Bird Flower) is used to treat sore eyes, relieve headaches, swelling



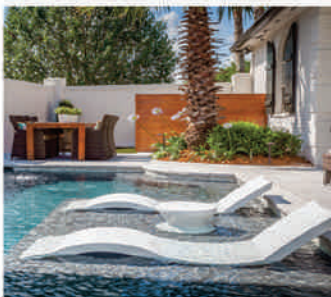
MADE IN USA

Live Life On the Ledge

Relax in water, in style with our trademark in-pool furniture

IN-POOL FURNITURE. OUTDOOR FURNITURE.

Whether you are poolside or beachside, at a 5-star resort, or relaxing on your own patio, we believe the perfect day is spent outside. Our products are designed to create perfect outdoor spaces for entertaining and relaxation. Featuring classic outdoor furniture pieces, stylish, convenience-adding accessories, and our signature in-pool furniture for in water use, all Ledge Lounger products are made of high quality materials and designed to withstand the elements, so you can relax with peace of mind and enjoy the amenities of the outdoors all year round.



LEDGE LOUNGER PRODUCT FEATURES



High quality
in-water furniture



Marine-grade
accessories



Customizable
options



Commercial or
residential use



Made in
the USA



For more information please visit www.ventanallc.com

✉ info@ventanallc.com

Ventana LLC | P.O.Box: 127822 | Dubai | UAE.

Tel: +971 4 323 1603 | Fax: +971 4 380 6957

A member of the **Tanseeq Investment Group of Companies**

HEALTH CAMPUS



Photo: Doug Black



Photo: Doug Black

and bruising; and the boiled leaves of the 'Yamarrara' (Eucalyptus tree) are said to cure colds and treat wounds.

Upon opening, Terry Hill, CEO of the Pilbara Development Commission said "The legacy of the health campus goes beyond bricks and mortar; it's created new opportunities for residents and attracted a new wave of families to town."

Project name: Karratha Health Campus

Location: Karratha, Australia

Aboriginal Nation: Ngarluma

Landscape Architect: Hassell

Scale: 1.3 ha

Completed: 2018

Client: Multiplex

Owner: Western Australian Government | Department of Health & WA Country Health Service

Collaborators: Architecture: Hassell

Consultants: Pritchard Francis (Structural, Civil), Wood & Grieve Engineers: (Mechanical, Electrical, Hydraulics, Security & ESD), Philip Chun (Compliance), LD Total (Irrigation), FORM (Public Art Consultant), Multiplex/Frogmat (Landscape Contractor)

Artists: Simon Gilby, Leanne Bray, Ian Dowling, Cliff Samson, Kyle Hughes-Odgers

Imagery: Robert Frith, Douglas Mark Black

Awards

- 2019 Australian Institute of Landscape Architects National Awards – Landscape Architecture Award for Civic Landscape
- 2019 Australian Institute of Landscape Architects (WA) – Award for Civic Landscape
- 2019 Australian Institute of Architects (WA) – Award for Public Architecture

Sustainability fast facts

- 22,000 water-wise native plants used
- 337 new trees planted
- 6 mature trees transplanted from the former hospital





Uniflora offers a wide range of products and services including:

LIVING & ARTIFICIAL
GREEN WALLS

POTS & PLANTERS

INDOOR & OUTDOOR
LIVE PLANTS & TREES

FLORAL SUBSCRIPTIONS
& EVENTS

PRESERVED PLANT
& MOSS WALLS

ARTIFICIAL TOPIARIES

INDOOR & OUTDOOR
ARTIFICIAL PLANTS & TREES

ANNUAL MAINTENANCE
SERVICES



Uniflora

A member of the Tanseeq Investment Group of Companies

Uniflora LLC
PO Box 3151
Dubai, UAE

Tel: +971 4 321 6545

Fax: +971 4 380 1717

E-mail: info@uniflora.ae

www.uniflora.ae / www.greenwalls.ae



MIDDLE EAST SMART LANDSCAPE SUMMIT 2020

MIDDLE EAST'S LEADING EVENT ON BUILDING
HEALTHY NATURAL ENVIRONMENTS AND
SUSTAINABLE COMMUNITIES

FAST FACTS



400+
Senior Delegates
Attended



150+
Top Companies
Represented



40+
Industry Expert Speakers
from Around the World



20+
Industry Relevant
Topics



10+
Hours of
Networking

7-8

APRIL 2020
Sofitel The Palm
Resort & Spa
Dubai, UAE

2020 SPONSORS & PARTNERS



Manufacturers of Expanded Perlite
for Constructional, Cryogenic, Agricultural & Hydroponic applications.



PROVIDING CONCRETE SOLUTIONS



الكون لصناعة الحجر الصناعي ذ.م.م.



Landscape
MIDDLE EAST

EMEoutlook



A Member of the Tanseeq Investment Group of Companies



Dubai Creek Harbour - Island District - Phase 1

Water-in-Motion specializes in the engineering design, supply and installation of technologically advanced landscaping products and services for residential, commercial and leisure developments including:

WATER BODIES

Swimming Pools
Dancing & Interactive fountains
Lakes, Ponds, Streams & Cascades
Spas & Health Retreats

LIGHTING

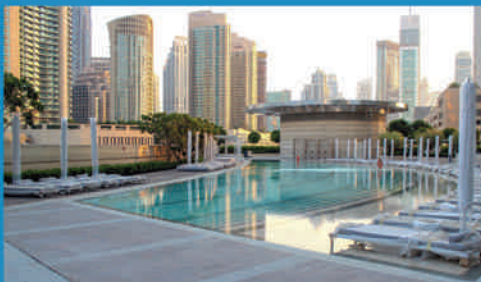
Digital Screens
Architectural Lighting
Landscape Lighting
Lighting for Water Bodies

DESIGN & BUILD

Hard Landscaping
Soft Landscaping
Civil and MEP Works
Irrigation Networks

ANCILLARY STRUCTURES

Changing Rooms & Gate Houses
Pump Rooms
Retaining Walls
Underground Structures



The Address Residences – Sky Views



The North Park - DSO



DAMAC Towers – Paramount Hotels & Resorts Dubai

Water In Motion LLC
PO BOX 28665, Dubai, UAE
Tel: +971 4 277 0244
Fax: +971 4 277 0424
info@waterinmotionllc.com
www.waterinmotionllc.com

COMPANY LISTINGS

LANDSCAPE CONTRACTOR

► Nakheel Landscapes

T: +974 44085333
F: +974 44983420
info@nakheelandscapes.com
www.nakheelandscapes.com

► Desert Group

T: +971 4 3404440
T: +971 4 34044416
group@desertgroup.ae
www.desertgroup.ae

► Innovator Speed Landscapes

T: +971 4 2242440
daniel.innovatorlandscapes@gmail.com

BUILDING MATERIALS

► Creative Concrete Concepts

T: +971-6-532- 1119
F: +971-6-532-8833
www.tex-crete.com
info@tex-crete.com

► Hepworth

T: +971 4 2894670
F: +971 4 2894620
www.hepworth.ae

FOUNTAIN

► Watermaster

T: +974 4 4442494
F: +974 4 4375923
jtaouk@watermasterqatar.com
www.watermaster.me

► OASE Living Water

T: +971 4299 4847
F: +49 5454 809412
uae@oase-livingwater.com
www.oase-livingwater.com

► Ghesa

T: +971 4 4328299
F: +971 4 4328298
info@ghesa.ae
www.ghesawaterart.com

CAST STONE & CONCRETE STREET FURNITURE

► Orient Stone Technology Factory L.L.C.

T: +971 6 543 0832
F: +971 6 543 0831
info@ost.ae
www.ost.ae

TURF/LANDSCAPE PROFESSIONAL PRODUCTS

► Polyclean LLC

(Turf Division)
T: +971 4 338 8226
F: +971 4 338 8785
babiker.khateeb@polyclean.ae
riyad.mustafa@polyclean.ae
www.polyclean.ae

LANDSCAPE PRODUCTS

► WT Burden

T: +971 4 8860700
F: +971 4 8860701
streetfurniture@wtburden.ae
www.wtburden.ae

► Tanseeq LLC

T: +971 4 3617199
F: +971 4 3607966
info@tanseeqllc.com
www.tanseeqllc.com

IRRIGATION

► Hunter Industries

T: +001 760 591 7114
F: +001 760 591 7194
Hanna.Zaidan@hunderindustries.com
www.hunterindustries.com

► METTS Fzc

T: +971 4 4470927
F: +971 4 4470928
info@mettsfzc.com
www.mettsfzc.com

► Alwasail Industrial Co.

T: +971 4 8886987
F: +971 2 6733565
hashim@alwasail.com
www.alwasail.com

► Rain Bird

T: +971 4 8819671
F: +971 4 8819672

TREES & HERBS

► Orientalis

T: +971 4 429 00 44
F: +971 4 422 52 96
info@orientalis.co
www.orientalis.co

SPORT'S FACILITIES / PLAYGROUND EQUIPMENTS

► Raymond Sport

T: +971 4 3391331
T: +971 2 4499196
F: +971 4 3391080
office@raymondsport.com
www.raymondsport.com

► Faris Group

T: +971 4 2888972
dubai.office@farisgroup.net
www.farisgroup.net

ACQUATIC PLAY

► Vortex

T: +15146943868
info@vortex-intl.com
www.vortex-intl.com

SWIMMING POOL

► Olympic Swimming Pools Installation LLC

T: +971 4 3362266
F: +971 4 3355299
info@ospools.com
www.ospools.com

► Pentair

T: +971 4 44470927
F: +971 4 4470928
malikhan@mettsfzc.com
www.mettsfzc.com

► Satma International L.L.C.

T: +971 4 2956088
F: +971 4 2956077
satmaint@emirates.net.ae
www.satma.ae

SOIL ADDITIVES

► Zeoplant LLC

T: +971 4 4473588
F: +971 4 4473587
info@zeoplant.com
www.zeoplant.com

► Agri Soil Organic Fertilizer Trading

T: +971 4 2765988
F: +971 42765977
Mob +971559995196
info.agrisoil@agritech-group.com
www.agripower.com.au

METAL FABRICATOR

► m-tec

T: +466 125 4773718
info@m-tec.uk.com
www.m-tec.uk.com

LANDSCAPE CONSULTANTS

► JC Melone Landscape Design FZ LLE

T: +971 50 6410715
jcmelone@gmail.com

List your company
in our Listing
Page that reaches
thousands of
subscribers

Book your space Now!

Contact: admin@landscape-me.com • Tel: +971 4 4470927

AED
250
per month



MULTI¹ONE[®]

ONE MACHINE To Replace Many

170 different attachments



Aerial work platform



Hydraulic bio shredder



Log splitter



Tree Spade



Core aerator



Leveler



Combo Bucket



Stump grinder



Big bag lifter



Power harrow



Power plow



Dual Blade Hedge Trimmer



Flail mower



Side flail mower



Sickle bar mower



Tornado lawn mower

With more than 170 attachments, MultiOne can become a lawnmower, a fork lift, a compact tractor, a telescopic loader, a concrete mixer or even a personnel lift in seconds!

The MultiOne is the ultimate machine in a compact body!

U.A.E. Distributor

Ventana LLC
P.O.Box 127822, Dubai, U.A.E.
Tel: +971 4 323 1604
Fax: +971 4 380 6957
info@ventanallc.com
www.ventanallc.com



A member of the Tanseeq Investment Group of Companies

NEW ONGOING PROJECTS



middleeasttenders.com +971 2 634 8495

STATUS : NEW TENDER

TRADE CATEGORY : AGRICULTURAL, LANDSCAPING AND IRRIGATION

NEW & CURRENT PROJECTS

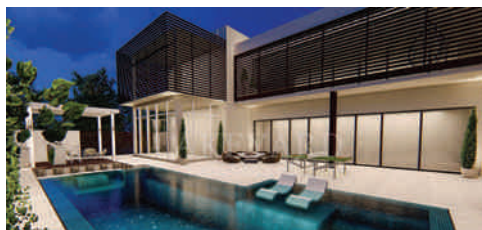
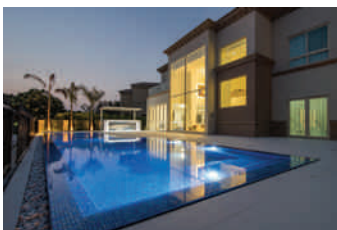
Tender Name	Description	Client	Region	Tender Cost (USD)	Post Date	Closing Date
Agricultural Services	Supply of Operating Agricultural Services.	Ministry of National Guard (Saudi Arabia)	Saudi Arabia	1333	11/25/2019	1/13/2020
Agricultural Materials	Supply of Various Agricultural Materials at the Institute of Technical Studies	Royal Saudi Naval Forces (Saudi Arabia)	Saudi Arabia	133	11/12/2019	1/12/2020
Outdoor Equipment & Lighting Works	Provision of Works for Walkway with 879m Length Include Hard Landscaping, Outdoor Equipment and Lighting Works including but not Limited to Precast Concrete Block Pavement, Etc.	Ministry of Works, Municipalities Affairs & Urban Planning (Bahrain)	Bahrain	164	12/9/2019	1/8/2020
Lighting Works	Provision of work for Hard Landscaping, Outdoor Equipment and Lighting Works.	Ministry of Works, Municipalities Affairs & Urban Planning (Bahrain)	Bahrain	132	12/6/2019	1/8/2020
Management & Operation	Provision of work for Management and Operation of Prevention and Control Program of Red Palm Weevil in Medina.	Ministry of Environment, Water & Agriculture (Saudi Arabia)	Saudi Arabia	800	11/11/2019	1/5/2020
Gardening Services	Provision of Gardening Services	Department of State (USA)	Iraq		12/20/2018	12/31/2019
Agriculture Maintenance	Provision of work for Execution and Maintenance of Agriculture at Kuwait International Airport.	Directorate General of Civil Aviation (Kuwait)	Kuwait		10/1/2019	12/29/2019
Landscaping Services	Provision of work for Landscaping Services, Gardening and Maintenance of Green Space, Caretaker, Warehouse.	Hormozgan Regional Water Company (Iran)	Iran		12/5/2019	12/23/2019
Organic Agriculture Development	Provision of work for Development of Organic Agriculture Ministry Branch.	Ministry of Environment, Water & Agriculture (Saudi Arabia)	Saudi Arabia	267	11/25/2019	12/22/2019
Agricultural Extension	Provision of work for Agricultural Extension.	Ministry of Environment, Water & Agriculture (Saudi Arabia)	Saudi Arabia	267	11/21/2019	12/22/2019
Landscaping Works	Provision of work for Improving and Beautifying the Fields.	Riyadh Municipality (Saudi Arabia)	Saudi Arabia	2667	11/19/2019	12/17/2019
Water Irrigation	Provision of work for Water Irrigation.	Ministry of Education (Saudi Arabia)	Saudi Arabia	267	10/23/2019	11/18/2019
Natural Flowers	Supply of Natural Flowers.	Amiri Diwan (Kuwait)	Kuwait		10/15/2019	11/17/2019
Agricultural Equipment	Supply of Agricultural Equipment Spare Parts.	Saudi Land Forces Camp (Saudi Arabia)	Saudi Arabia		10/10/2019	11/17/2019
Gardens & Roads Maintenance	Provision of work for Maintenance for Soft Landscaping in Gardens and Roads.	Northern Area Municipality (Bahrain)	Bahrain	263	10/29/2019	11/13/2019

Tenders
www.MiddleEastTenders.com

Get the latest Tenders and Project Information in the Middle East

P.O.Box 2534 , Abu Dhabi, UAE Tel- +9712-6348495 Fax- +9712-6316465 Email: info@middleeasttenders.com

WE **CREATE** LIVEABLE **BEAUTY** THROUGHOUT THE **UAE**



LAKEYARD CONTRACTING LLC

www.lakeyards.ae

Contact no. +971 50 450 6575

Office No. +971 4 370 2003



Giving you the power to **TAKE CONTROL**



Complete Water Management Solutions for Small to Large Commercial Projects

The ESP-LX Series Controllers combine modularity with advanced water management. ESP-LXD Controllers offer the efficiency of two-wire control for up to 200 stations. Use these controllers with the IQ NCC Communication Cartridge to upgrade to IQ Central Control for remote programming and monitoring. The WS-PRO2 Weather Station can also be used with IQ to store weather data from field locations and provide years of reliable data, even in the toughest environments.



UAE – JAFZA, Dubai T: +971 4 8819671 • gulf-turf@rainbird.com | KSA – Riyadh T: +966 12 6611525 • KSA-turf@rainbird.com | Egypt – Cairo M: +20 122 2188869 • Egypt-turf@rainbird.com

RAIN BIRD®